

PULSARCRONO

GIUGIARO
D E S I G N



mosaico+

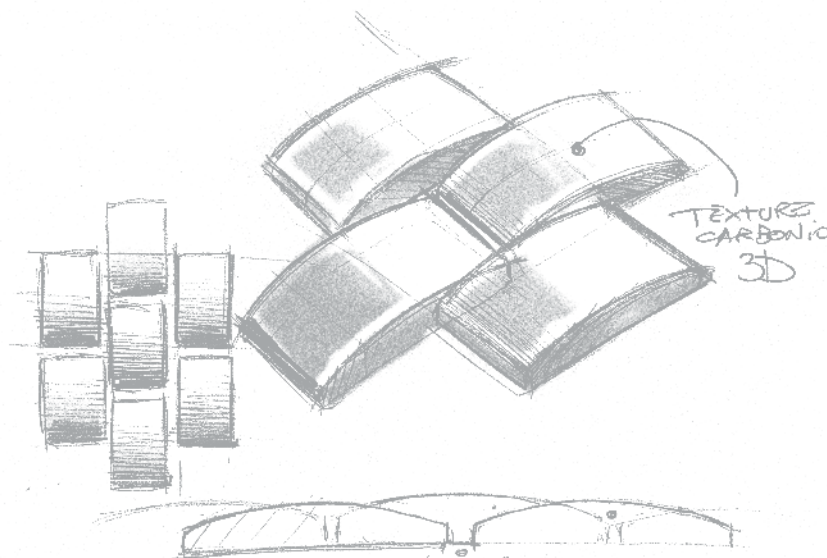
PULSAR**CRONO**



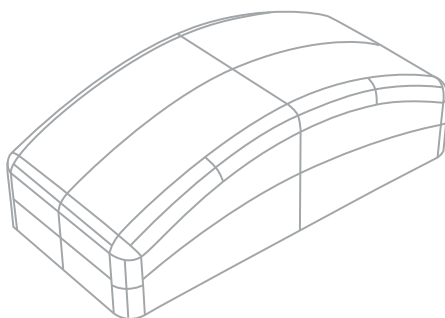
PULSARCRONO

GIUGIARO
DESIGN

mosaico+

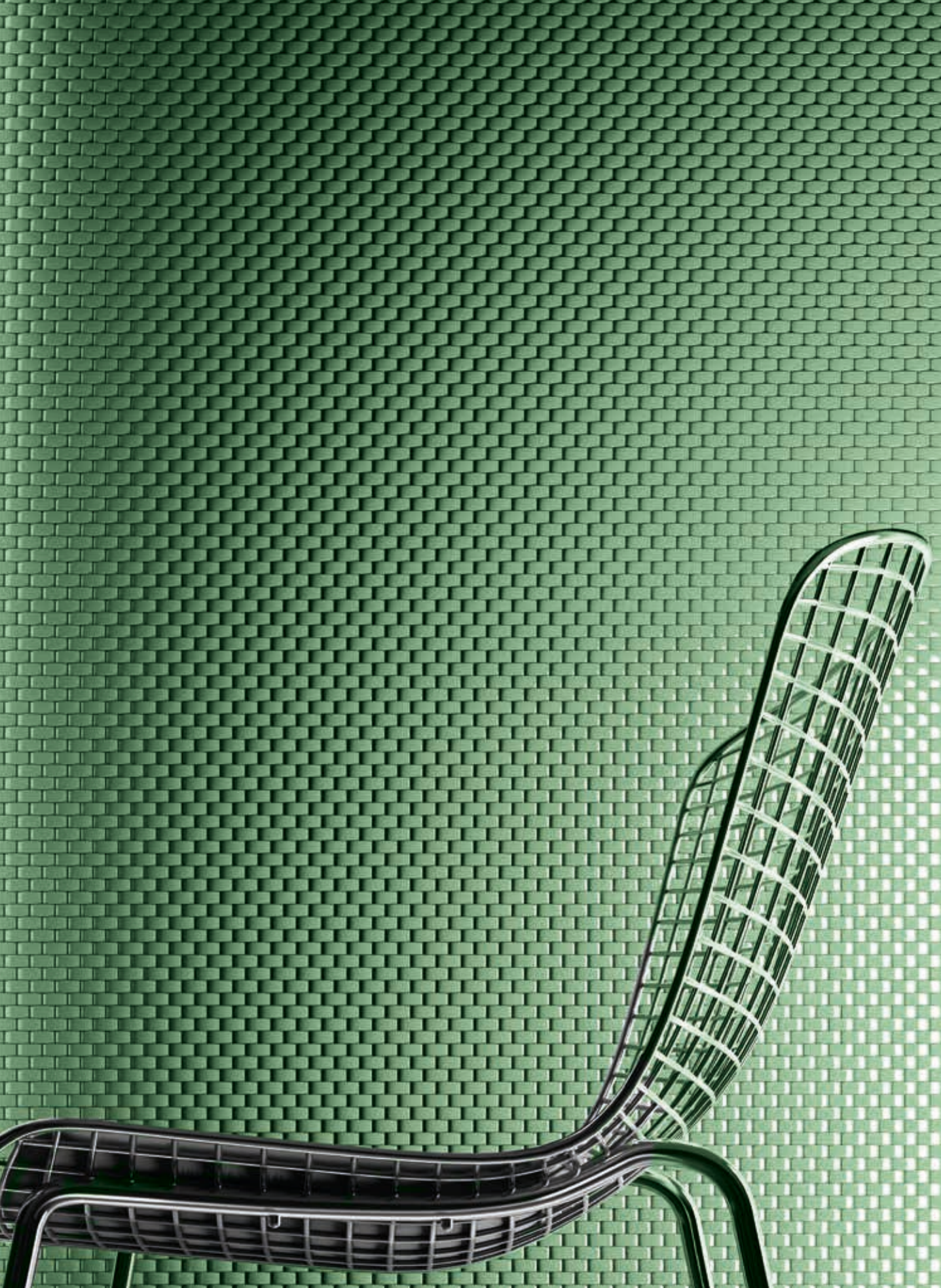


un impulso, una traiettoria, una raffinata forma filante
an impulse, a trajectory, a refined, streamlined shape



Densità di colore e geometria di forme caratterizzano il design filante e arrotondato di Pulsar, che suggerisce traiettorie prospettiche e morbidi intrecci dove la tridimensionalità e il movimento sono protagonisti delle composizioni. Superfici brillanti, disegnate con l'elemento base della tessera di mosaico, danno vita a composizioni sobrie ma allo stesso tempo raffinate per spazi pubblici e residenziali. Patterns dalla originale tattilità, nell'intreccio di forme affusolate e morbide, personalizzabili a misura della propria creatività, esprimono tutta la bellezza e l'originalità di un progetto Made in Italy.

Colour density and geometry of shapes characterise the streamlined, rounded Pulsar design, which suggests prospective trajectories and soft weaves, where three-dimensionality and movement are the protagonists of the compositions. Shiny surfaces, designed with the basic element of the mosaic tile, breathe life into compositions which are simple yet refined for public and residential areas. Patterns with original tactility in the interweaving of tapered and smooth shapes, where customisation is limited only by creativity, express all the beauty and originality of a 100% Italian project.





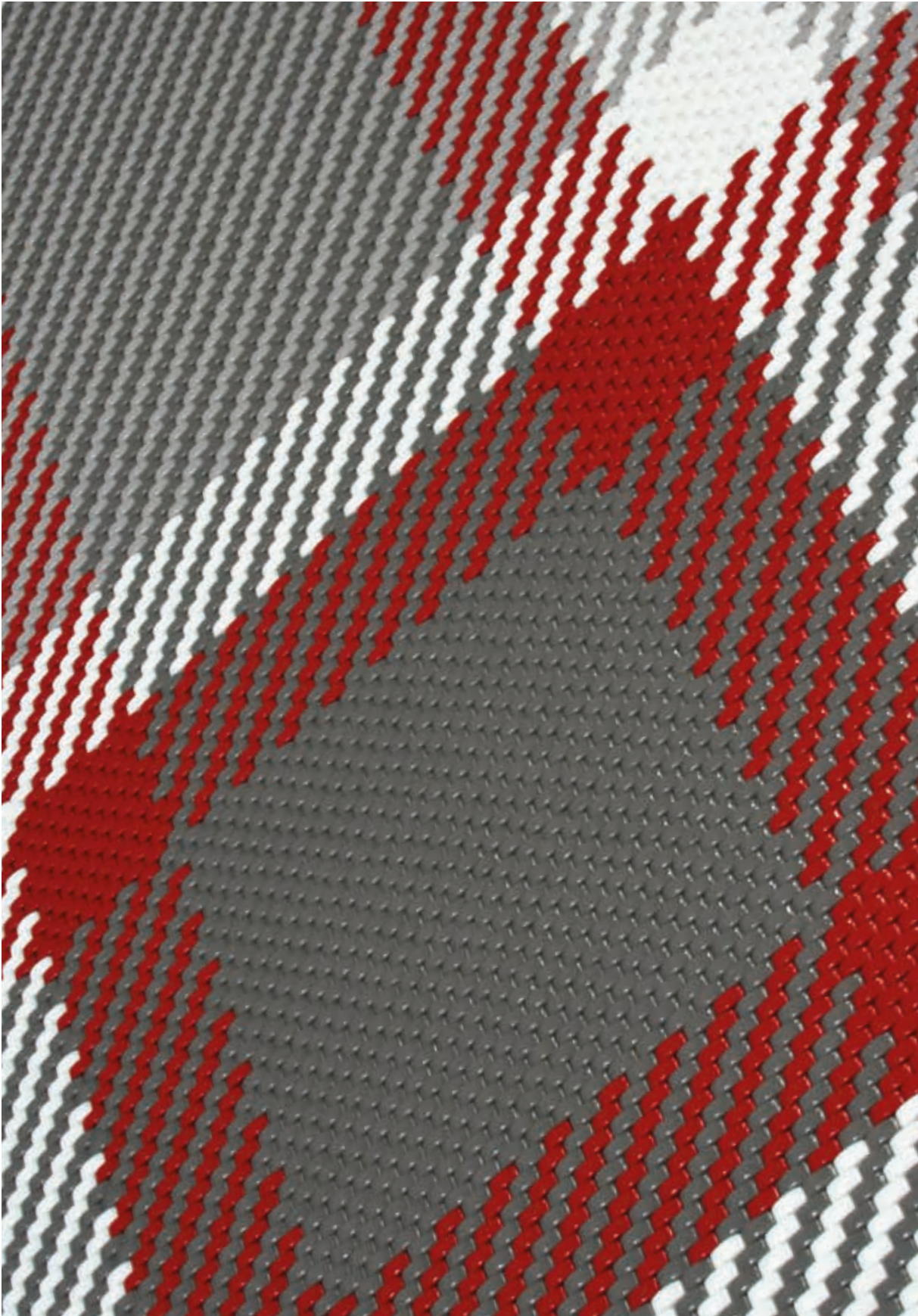


















PULSARCRONO

GIUGIARO
DESIGN

mosaico+



Bianco*



Grigio C.*



Grigio S.*



Nero*



Beige*



Verde Prato*



Petrolio*



Azzurro*



Blu*



Viola*



Rosso*



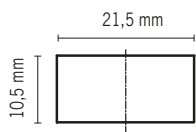
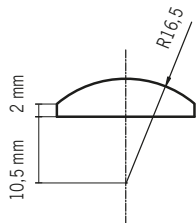
Grigio C. Matt*



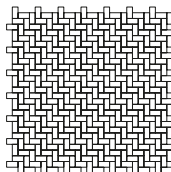
Grigio C. Metal*

*Pulsar layout 2

Tutti i colori sono disponibili anche nella finitura Matt e Metal / All colours are also available in matt and metal finishing.

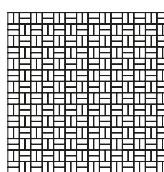


PULSAR LAYOUT 1



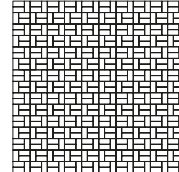
312x312 mm 12^{1/4}x12^{1/4}"
 □ 21,5x10,5 mm
 7/8x3/8"

PULSAR LAYOUT 2



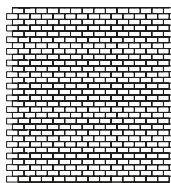
301x301 mm 11^{13/16}x11^{13/16}"
 □ 21,5x10,5 mm
 7/8x3/8"

PULSAR LAYOUT 3



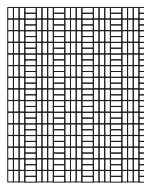
323x323 mm 12^{3/4}x12^{3/4}"
 □ 21,5x10,5 mm
 7/8x3/8"

PULSAR LAYOUT 4



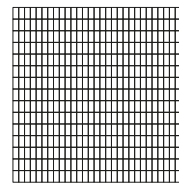
316x327 mm 12^{1/2}x12^{7/8}"
 □ 21,5x10,5 mm
 7/8x3/8"

PULSAR LAYOUT 5



274x329 mm 9^{3/4}x13"
 □ 21,5x10,5 mm
 7/8x3/8"

PULSAR LAYOUT 6



329x329 mm 13x13"
 □ 21,5x10,5 mm
 7/8x3/8"

PULSAR

Mosaico di vetro sinterizzato, riciclato al 95%, composto da tessere tridimensionali, non regolari e accostate, montate su rete in fibra di vetro. La forma tridimensionale della tessera e il giunto pressoché inesistente prevedono una posa senza stuccatura.

PULSAR

Mosaic made from 95% recycled sintered glass, comprising irregular three-dimensional chips placed close together without gaps, mounted on glass fibre mesh. Due to the three-dimensional chip shape and virtual absence of joints, this material should be laid without grouting.

CARATTERISTICHE TECNICHE TECHNICAL CHARACTERISTICS

Assorbimento d'acqua Water absorption (UNI EN ISO 10545/3)	Resistenza al gelo Frost resistance (UNI EN ISO 10545/12)	Resistenza agli sbalzi termici Thermal shock resistance (UNI EN ISO 10545/9)	Resistenza agli attacchi chimici Chemical resistance (UNI EN ISO 10545/13)
passes	passes	passes	passes
Resistenza alle macchie Stain resistance (UNI EN ISO 10545/14)	Resistenza dei colori alla luce Colour resistance to light exposure (DIN 51094)	Assenza Pb Cd Absence of Pb CD (UNI EN ISO 10545/15)	
passes	passes	passes	
Assorbimento acqua Water absorption ASTM C373-88	Resistenza gelo Frost resistance ASTM C1026-02	Resistenza al ciclo caldo/freddo Resistance to frost/defrost cycles ASTM C1026-87	Resistenza agli sbalzi termici Thermal shock resistance ASTM C484-99
passes	passes	passes	passes

IMBALLI PACKAGING

Layout	Misure / Tessera mm inches Chip / Size mm inches	Misure / Foglio mm inches Sheet / Size mm inches	Fogli / Scatola Sheets / Box	m ² Sq ft / Scatola Sq. Sq ft / Box
Pulsar layout 1		312x312 mm 12 ^{1/4} x12 ^{1/4} "		0,97 10,44
Pulsar layout 2		301x301 mm 11 ^{13/16} x11 ^{13/16} "		0,90 9,69
Pulsar layout 3		323x323 mm 12 ^{3/4} x12 ^{3/4} "		1,04 11,19
Pulsar layout 4	21,5x10,5 mm 7/8x3/8"	316x327 mm 12 ^{1/2} x12 ^{7/8} "	10	1,03 11,09
Pulsar layout 5		274x329 mm 9 ^{3/4} x13"		0,90 9,69
Pulsar layout 6		329x329 mm 13x13"		1,08 11,62

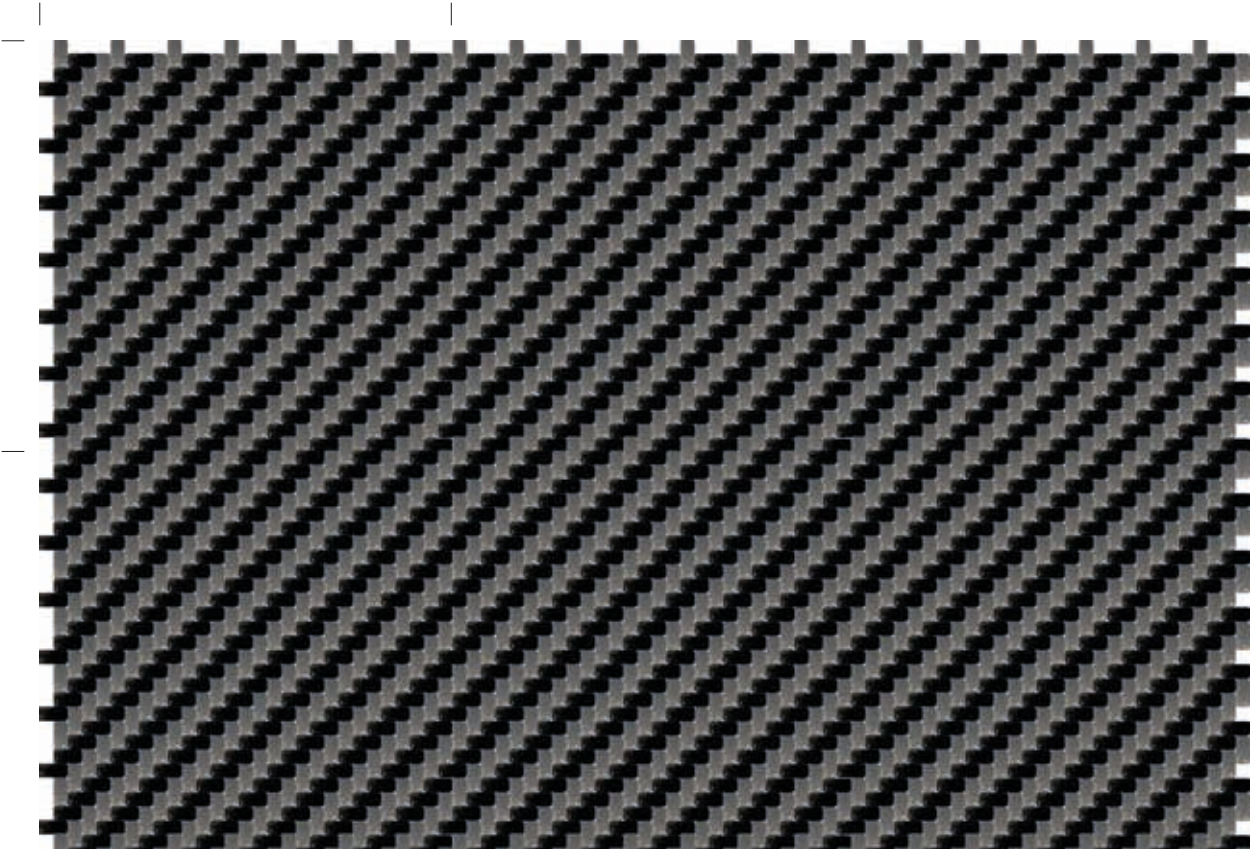
ogni layout può venire realizzato sia in tinta unita (10 colori a disposizione) che a colori miscelati / each layout can be created using both solid colours (10 colours available) and mixed colours



PULSARCRONO

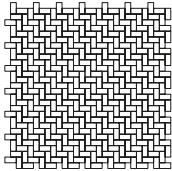
GIUGIARO
DESIGN

mosaico+



Tweed

PULSAR LAYOUT 1



312x312 mm 12^{1/4}x12^{1/4}"

IMBALLI PACKAGING

Layout	Misure / Tessera mm inches Chip / Size mm inches	Misure / Foglio mm inches Sheet / Size mm inches	Misure / Modulo mm inches Module / Size mm inches	Fogli / Scatola Sheets / Box	m ² Sq ft / Scatola Sq.m. Sq ft / Box
Pulsar layout 1 Tweed	21,5x10,5 mm 7/8x3/8"	312x312 mm 12 ^{1/4} x12 ^{1/4} "	312x312 mm 12 ^{1/4} x12 ^{1/4} " (1 foglio / 1 sheet)	10	0,97 10,44

PULSARCRONO

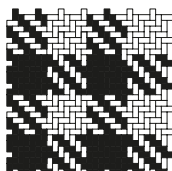
GIUGIARO
DESIGN

mosaico+



Principe di Galles

PULSAR LAYOUT 1



312x312 mm 12^{1/4}x12^{1/4}"

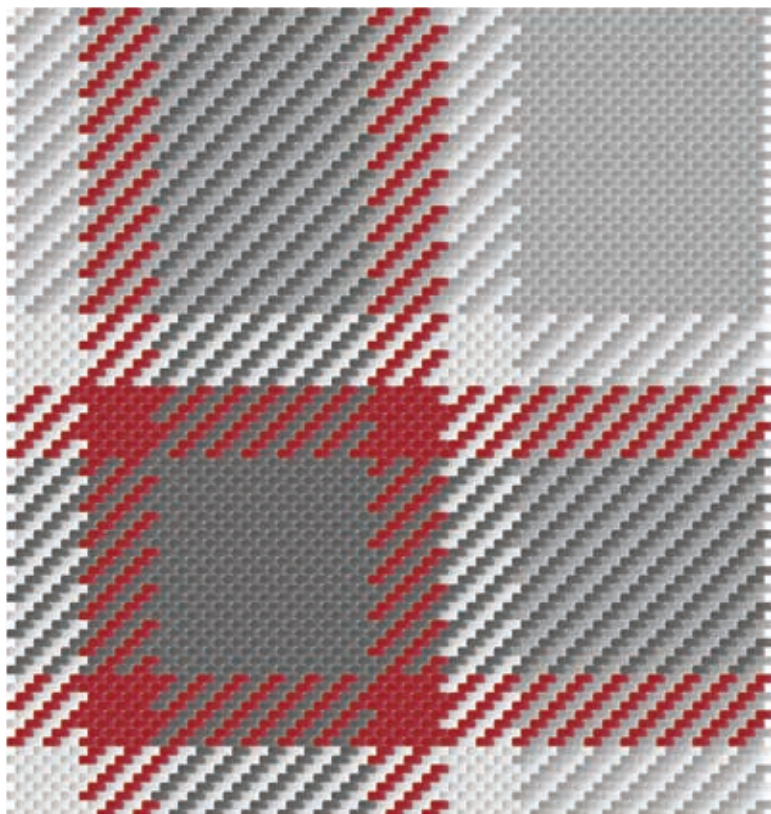
IMBALLI PACKAGING

Layout	Misure / Tessera mm inches Chip / Size mm inches	Misure / Foglio mm inches Sheet / Size mm inches	Misure / Modulo mm inches Module / Size mm inches	Fogli / Scatola Sheets / Box	m ² Sq ft / Scatola Sq m. Sq ft / Box
Pulsar layout 1 Principe di Galles	21,5x10,5 mm 7/8x3/8"	312x312 mm 12 ^{1/4} x12 ^{1/4} "	312x312 mm 12 ^{1/4} x12 ^{1/4} " (1 foglio / 1 sheet)	10	0,97 10,44

PULSARCRONO

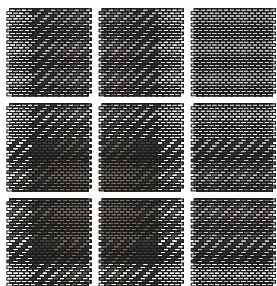
GIUGIARO
DESIGN

mosaico+



Tartan

PULSAR LAYOUT 4



316x327 mm 12^{1/2}x12^{7/8}"

IMBALLI PACKAGING

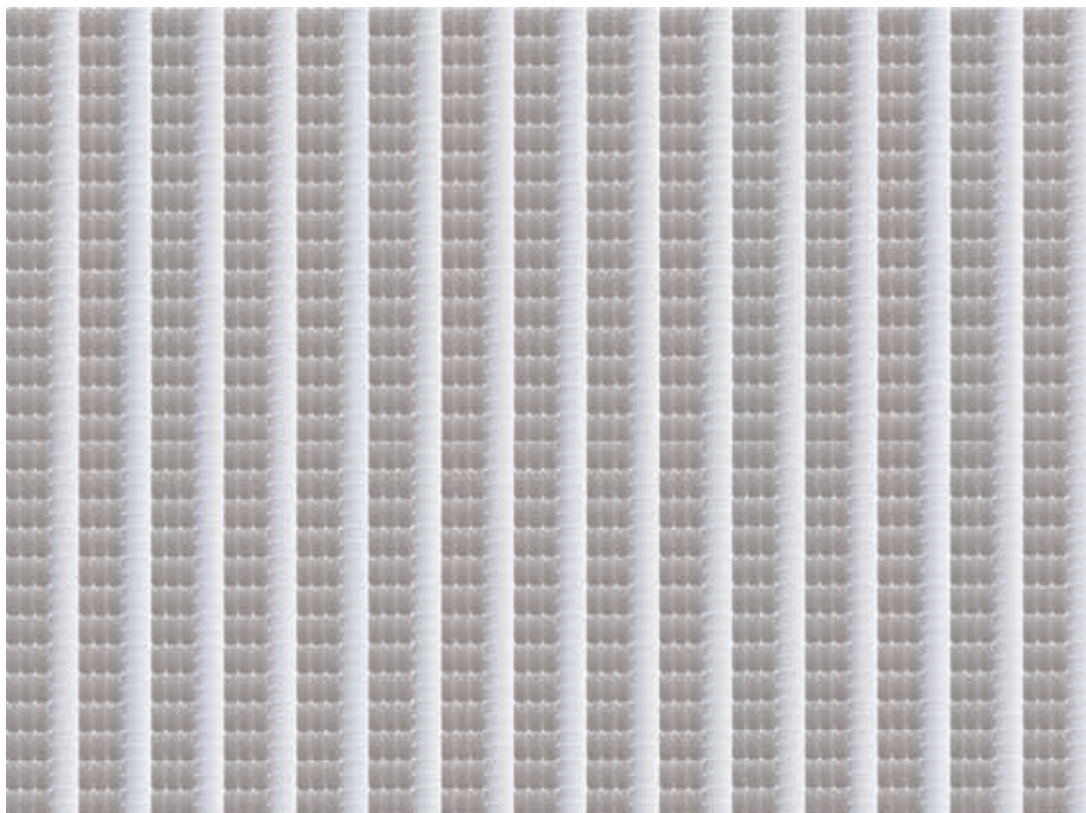
Layout	Misure / Tessera mm inches Chip / Size mm inches	Misure / Foglio mm inches Sheet / Size mm inches	Misure / Modulo mm inches Module / Size mm inches	Fogli / Scatola Sheets / Box	m ² Sq ft / Scatola Sq.m. Sq ft / Box
Pulsar layout 4 Tartan	21,5x10,5 mm 7/8x3/8"	316x327 mm 12 ^{1/2} x12 ^{7/8} "	948x981 mm 37 ^{5/16} x38 ^{10/16} " (3x3 fogli / 3x3 sheets)	9	8,37 90,09



PULSARCRONO

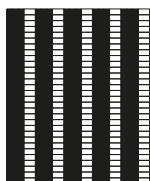
GIUGIARO
DESIGN

mosaico+



Briton Grey

PULSAR LAYOUT 5



274x329 mm 9^{3/4}x13"

IMBALLI PACKAGING

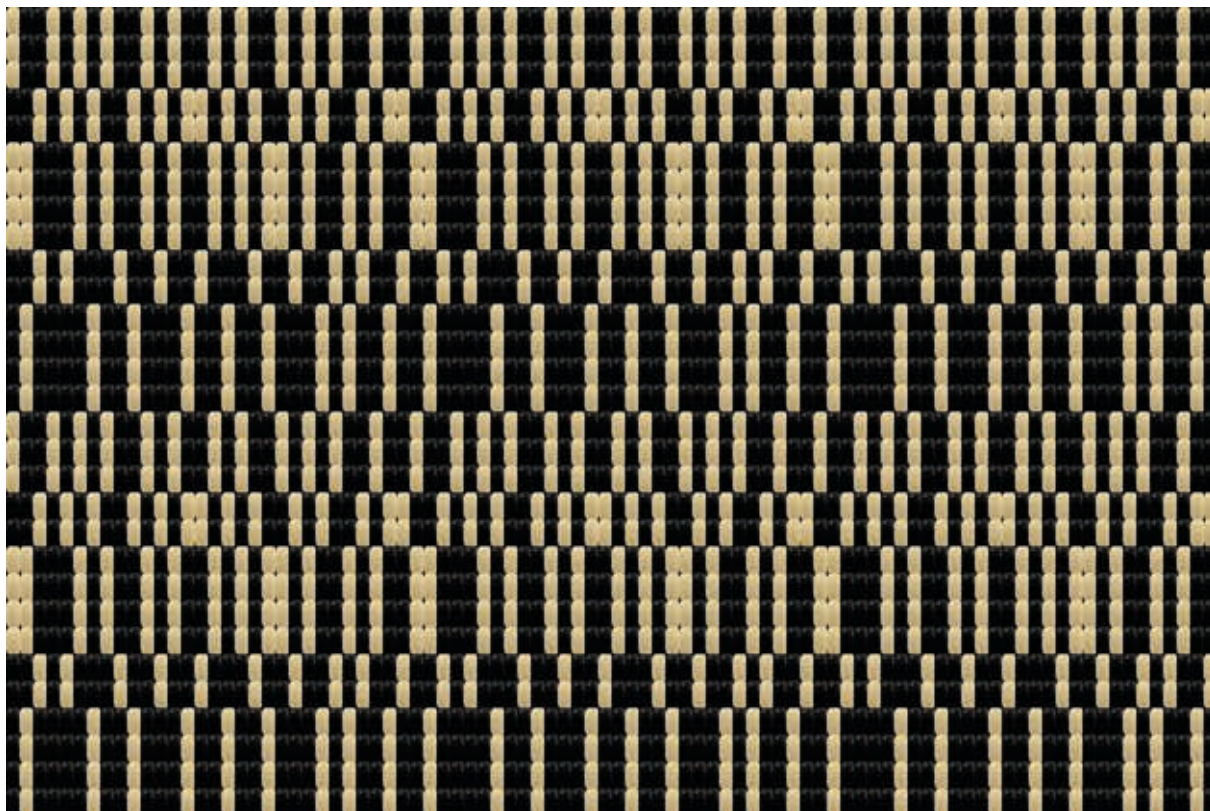
Layout	Misure / Tessera mm inches Chip / Size mm inches	Misure / Foglio mm inches Sheet / Size mm inches	Misure / Modulo mm inches Module / Size mm inches	Fogli / Scatola Sheets / Box	m ² Sq ft / Scatola Sq m. Sq ft / Box
Pulsar layout 5 Briton Grey	21,5x10,5 mm 7/8x3/8"	274x329 mm 9 ^{3/4} x13"	274x329 mm 9 ^{3/4} x13" (1 foglio / 1 sheet)	10	0,90 9,69



PULSARCRONO

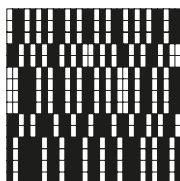
GIUGIARO
DESIGN

mosaico+



Diane Beige

PULSAR LAYOUT 6



329x329 mm 13x13"

IMBALLI PACKAGING

Layout	Misure / Tessera mm inches Chip / Size mm inches	Misure / Foglio mm inches Sheet / Size mm inches	Misure / Modulo mm inches Module / Size mm inches	Fogli / Scatola Sheets / Box	m ² Sq ft / Scatola Sq m. Sq ft / Box
Pulsar layout 6 Diane Beige	21,5x10,5 mm 7/8x3/8"	329x329 mm 13x13"	329x329 mm 13x13" (1 foglio / 1 sheet)	10	1,08 11,62



PULSARCRONO

GIUGIARO
DESIGN

mosaico+



Sixty Green

PULSAR LAYOUT 6



329x329 mm 13x13"

IMBALLI PACKAGING

Layout	Misure / Tessera mm inches Chip / Size mm inches	Misure / Foglio mm inches Sheet / Size mm inches	Misure / Modulo mm inches Module / Size mm inches	Fogli / Scatola Sheets / Box	m ² Sq.ft / Scatola Sq.m. Sq.ft / Box
Pulsar layout 6 Sixty Green	21,5x10,5 mm 7/8x3/8"	329x329 mm 13x13"	3948x1645 mm 42 ⁸¹⁵ x35 ⁷¹⁶ mm (12x10fogli / 12x10 sheets)	-	6,49 68,86

green
product

95% recycled
glass



+ green

L'impegno di Mosaico+ a favore della sostenibilità ha portato a dati certificati e tangibili: un consumo energetico ridotto dell'85%, un risparmio sull'utilizzo di acqua del 50%, l'emissione di gas combustivi innocui e la certificazione TUV (Technischer Überwachungsverein) per alcuni prodotti, attestante la produzione con materiale riciclato (66,5% post-consumer e 28,5% pre-consumer).

La collezione Crono firmata Giugiaro Design, realizzata in vetro sinterizzato, porta con sé questa visione ecologica in un prodotto ad altissima tecnologia, declinato in 11 varianti colori, 2 diverse tipologie di tessere e molteplici schemi compositivi.

Mosaico+'s commitment to sustainability has brought tangible, certified results: 85% less energy consumption, water consumption cut by 50%, harmless burnt gas emissions and TUV (Technischer Überwachungsverein) certification that some products are made from recycled material (66.5% post-consumer and 28.5% pre-consumer). The Crono collection styled by Giugiaro Design, manufactured in sintered glass, encapsulates this ecological vision in an extremely high-tech product, available in 11 colour variants, with 2 different types of chip and a wide variety of compositional layouts.